



ENGINEERED SPORTS RAILING







## WHY TUTTLE RAILINGS?

Since 1955 Tuttle Railings (a division of Dant Clayton Corporation) has offered industry leadership in custom aluminum and stainless steel railings.

Dant Clayton is the recognized leader in aluminum bleachers, permanent grandstands, stadium structures, and accessory products.

The combination of Tuttle Railings and Dant Clayton offers the broadest portfolio of integrated sports arena solutions.

- 90 years of experience in the design, fabrication and installation of railing and stadia equipment.
- 400,000 square feet of fabrication space between our Indianapolis and Louisville locations.
- 200 dedicated team members.
- 25 engineering team members equipped with the latest technologies.
- 12 project managers ensuring full compliance and customer satisfaction.

Tuttle Has Been Operating Since 1955



## DESIGN THE BEST SEAT IN THE HOUSE

Turn your vision into reality! Let our bleacher and railing experts help you create a facility where there is no such thing as a bad seat!

### Our Services Include...

- Budgeting/Design/Engineering
- Fabrication
- Pre-construction
- Project Management
- Installation
- Inspections



# AISLE RAILING

## The Challenges

- Building Codes require aisle railing whenever there are 2 or more risers.
- Functionality demands ease of traffic flow and adequate support.
- Sustainability mandates the use of material and finishes designed to endure inclement weather conditions and provide a lengthy life span.
- Budget necessitates ease of installation, light weight and design flexibility.

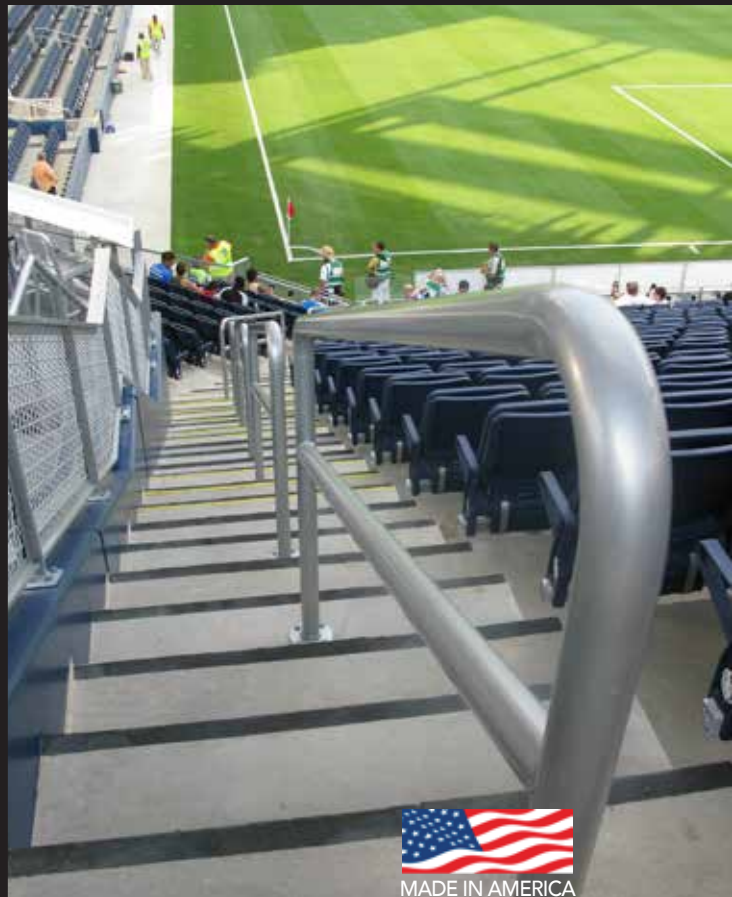
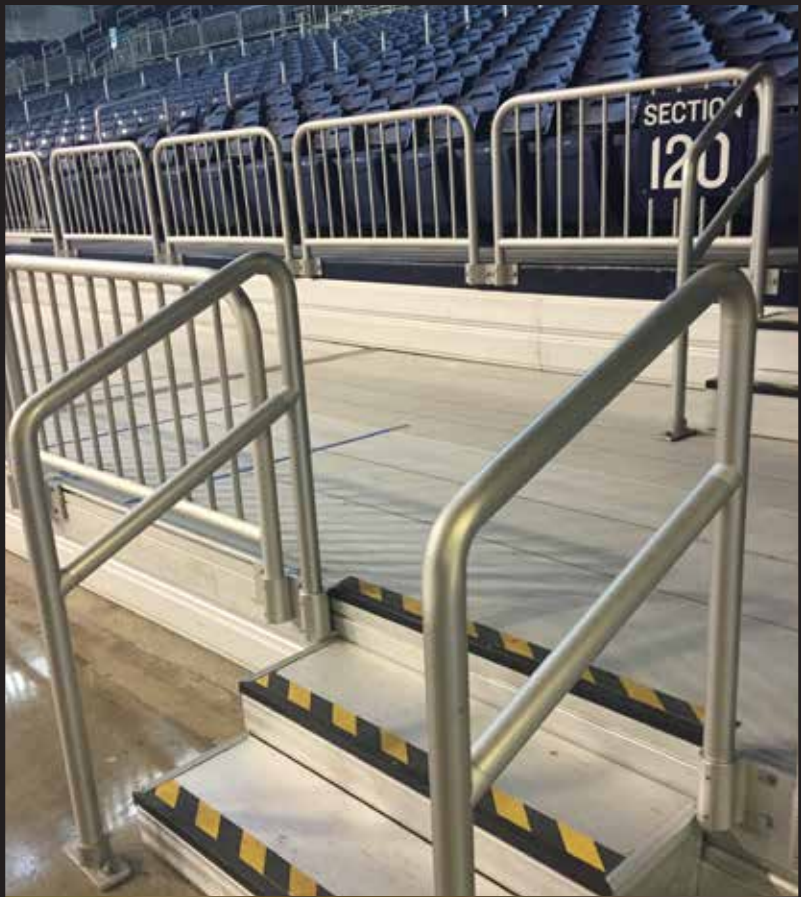
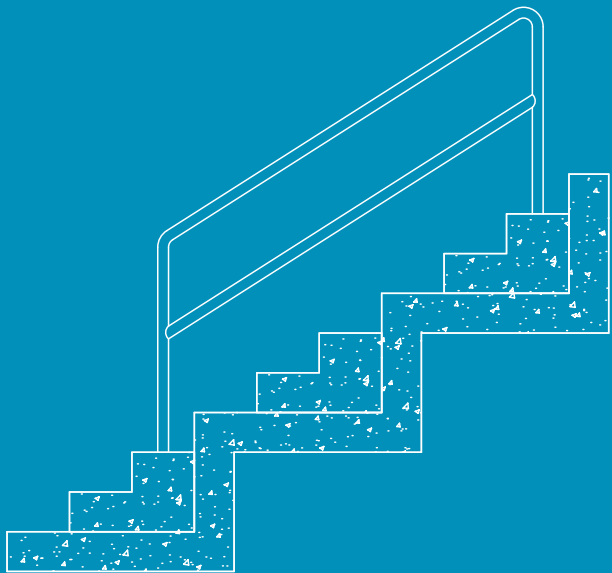
## The Solution

Aluminum pipe and tube railings offer ...

- Strength and durability
- Functional design options
- Sustainability
- Finishes include ...
  - Powder coated in a broad selection of colors
  - Anodized in clear or colored options



# AISLE RAILING







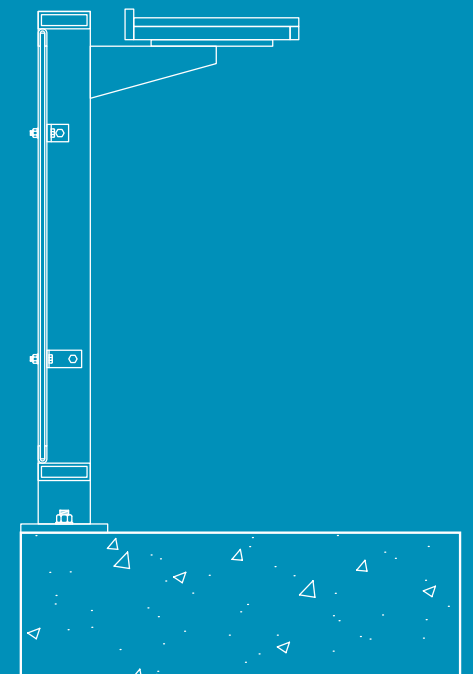
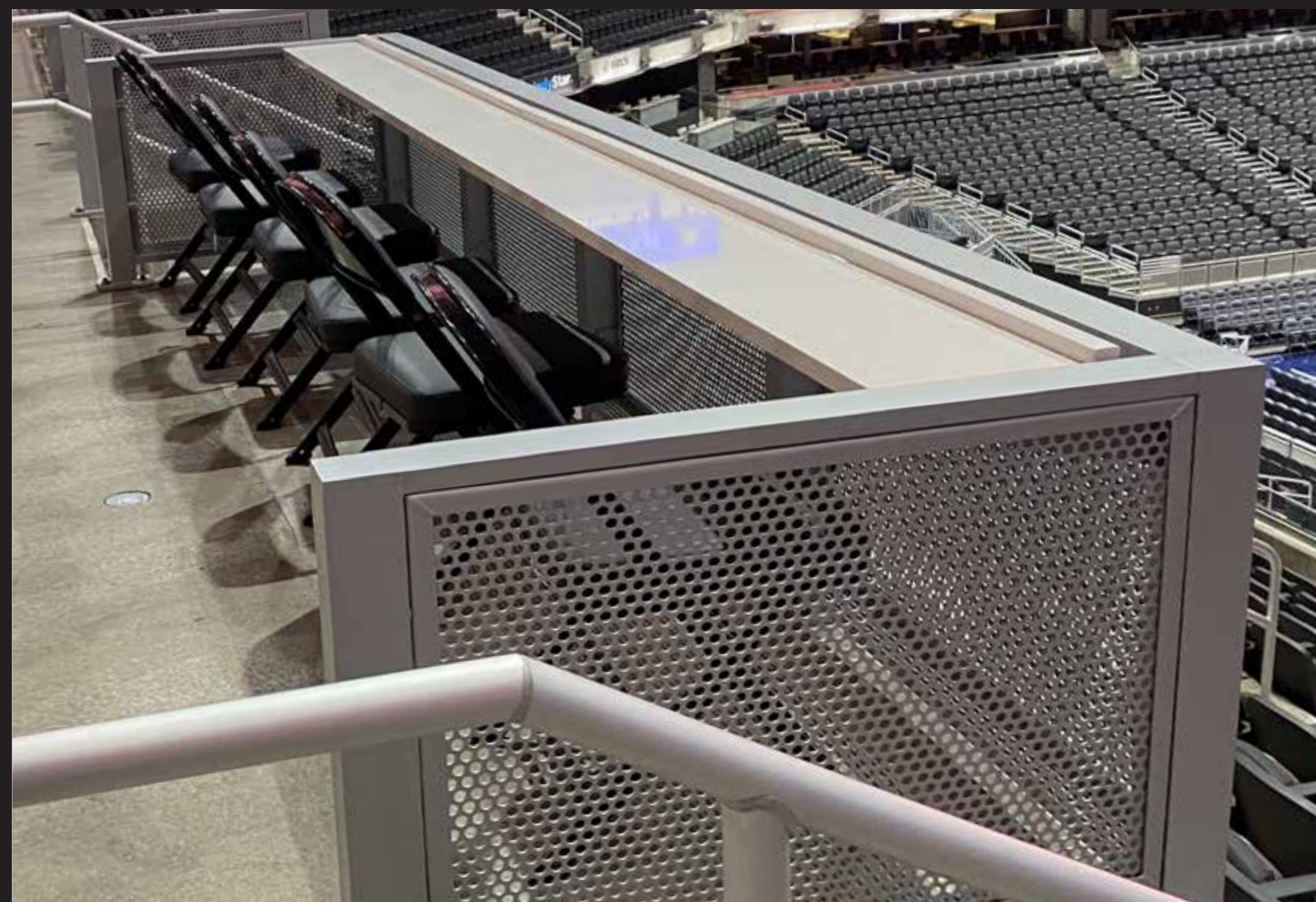
## DRINK RAIL

Drink Rails add flexibility to event participants throughout the arena. These highly customized fixtures are used in standing room areas, loge seating and private suite locations. Regardless of the fixture height (Seated or Standing) the design options are endless.

### Custom Solutions:

- Stainless Steel or Aluminum metal options.
- Powder Coated or Anodized.
- Mesh, perforated panel, glass or cable infills.
- Quartz, granite, wood or metal countertops.

## DRINK RAILING





# GLASS RAILINGS

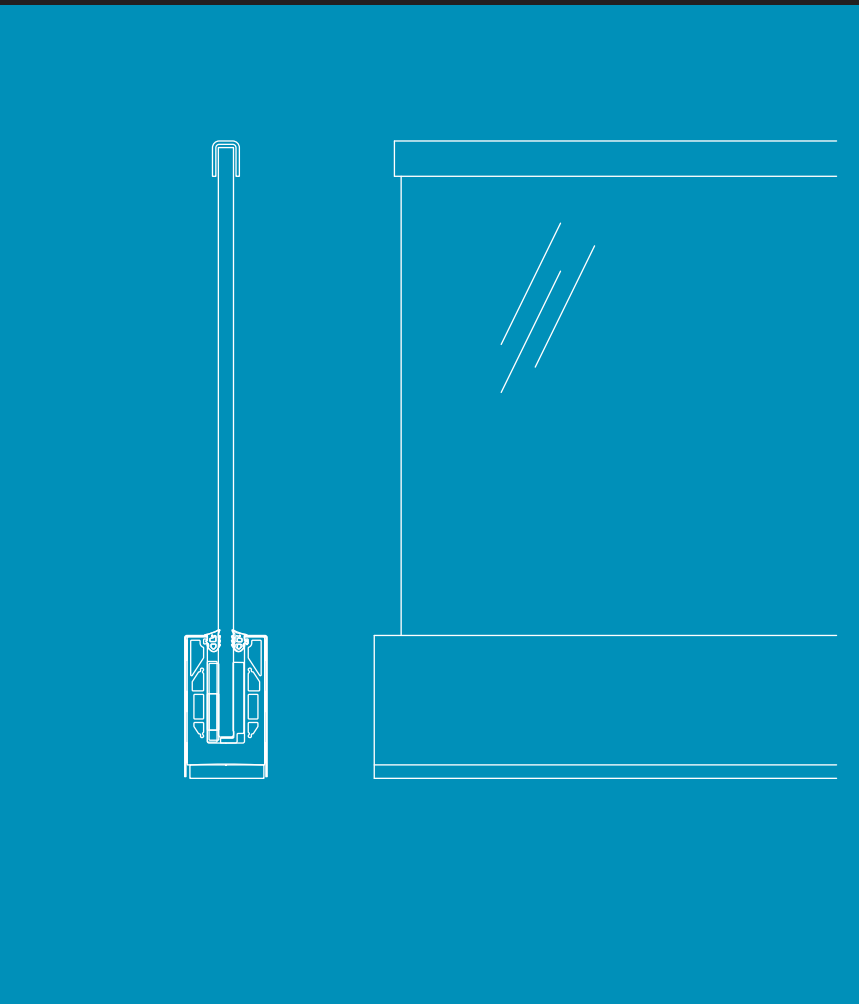
Today's modern arenas require functionality as well as style and sophistication. Clear unobstructed views often demand the use of glass rail systems. Glass rail systems offer performance which exceeds all load code criteria.

Glass railings are now used in ...

- Luxury suites
- Handicap ADA areas
- Balconies & overlook areas
- Standing room only areas



# GLASS RAILING







# VOMITORY RAILING

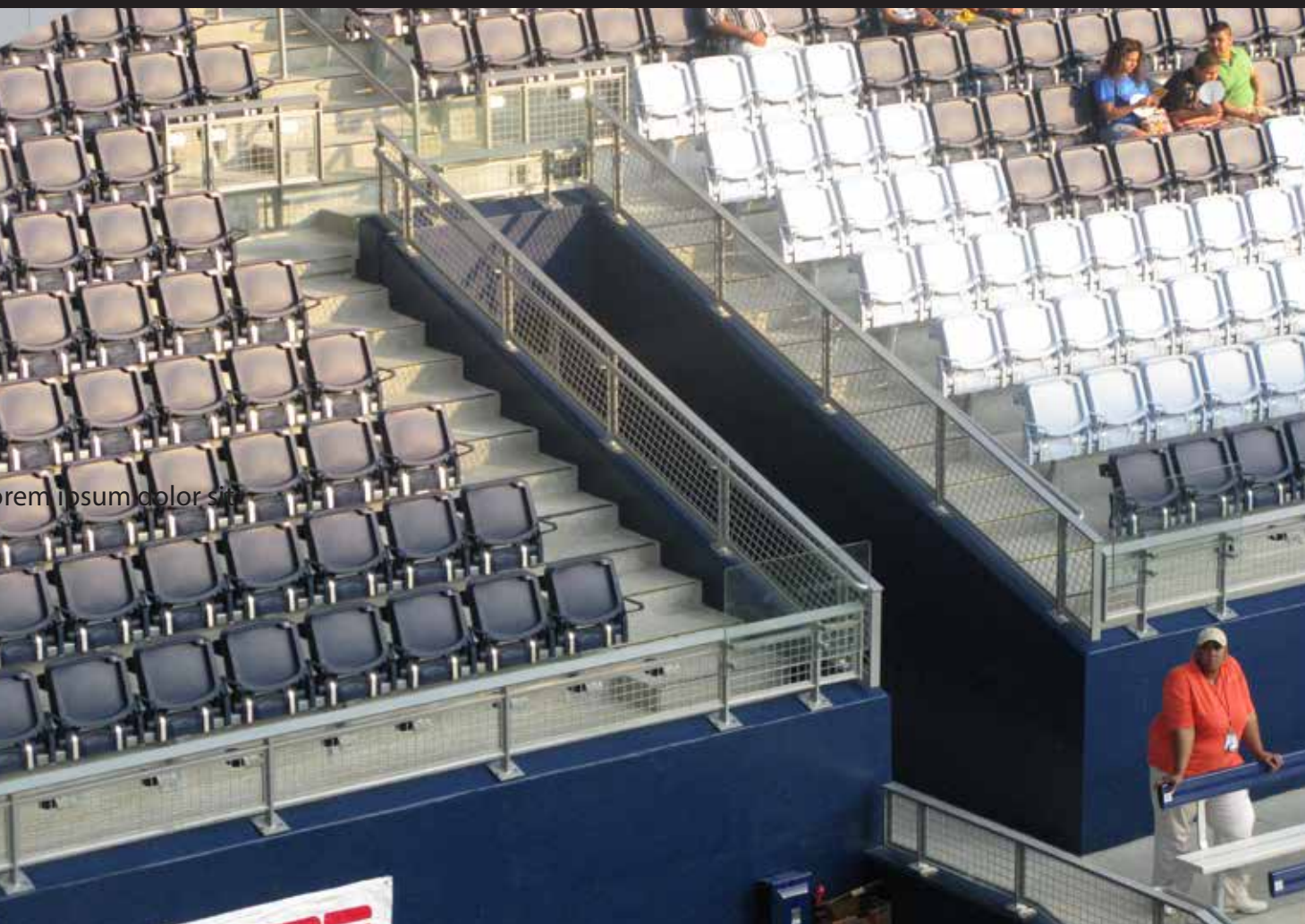
## VOMITORY RAILING

Vomitores offer ease of entrance and exit for sporting arenas. These areas often add unique design challenges as budget, functionality and aesthetic concerns must be met. Fall protection, sight lines and unobstructed views are all factors the designer must deal with in the final system selection.

Curb construction (concrete or steel) along with height must be considered in selecting the proper solution.

### Design options include...

- Glass Vomitores to offer maximum visibility.
- Bar Railings with Cable infill to offer a clear line of sight.
- Bar Railings with Mesh infill to offer greater fall protection.
- Pipe and Tube rails to offer a more simplistic solution.







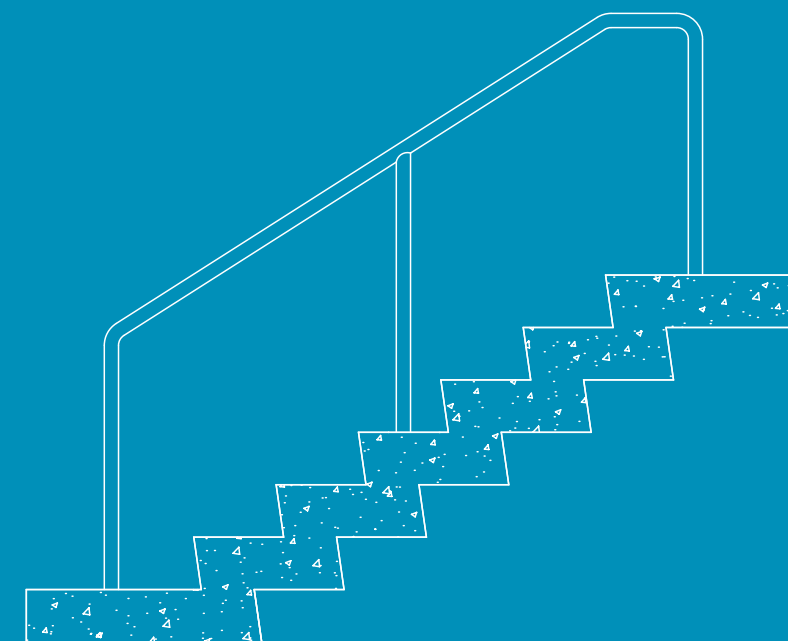
# PLAZA RAILING

## PLAZA RAILING

Plaza Rail (sometimes called site rail) is required to meet code when the exit area is identified as a primary means of egress. In such areas, IBC requires intermediate railings for all steps of 2 or more risers. Furthermore, the intermediate railing must be within 30 inches of reach from walking traffic. In such cases, wide area steps will require multiple rails.

### The Solution

- Aluminum pipe rail for sustainable weather resistant design.





# STANDING ROOM RAILING

Standing rails offer added flexibility and capacity for today's sporting enthusiasts. College sports, professional basketball, baseball, football, and soccer fans all enjoy the freedom to stand and enthusiastically support their team. Standing rails also offer crowd separation and safety in steep rake environments.

Added flexibility can be offered with optional folding seats for a wider variety of events.

## The Solution

- Custom engineered Aluminum pipe rail for sustainable weather resistant design.



# SEPARATION RAILING

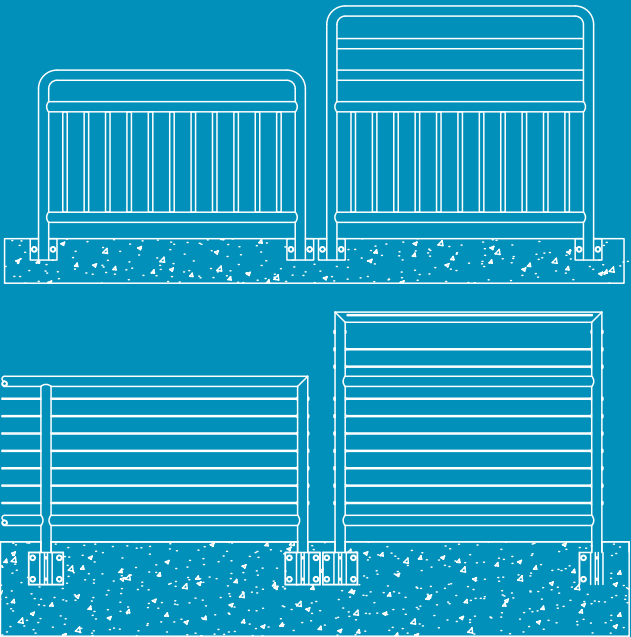
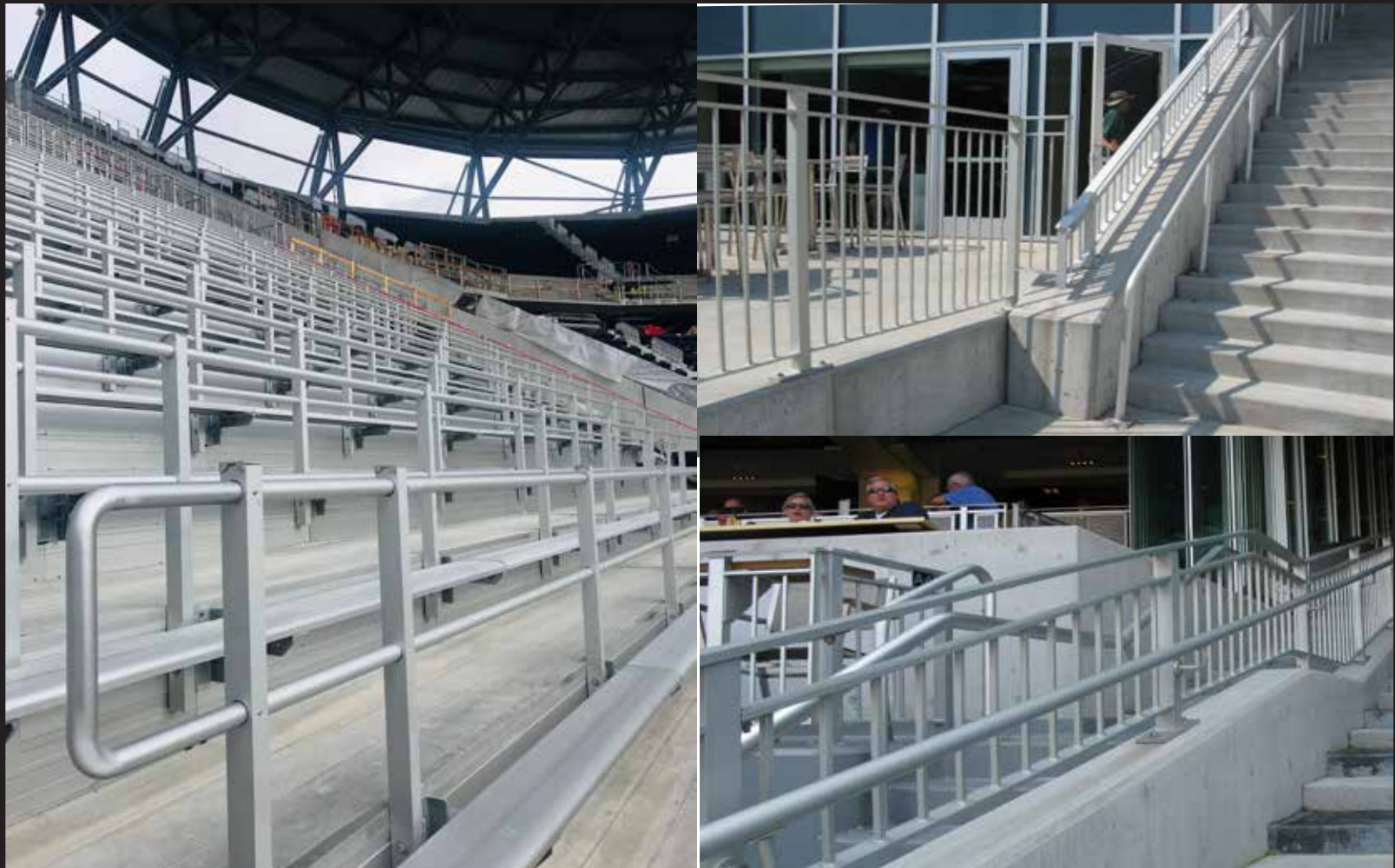
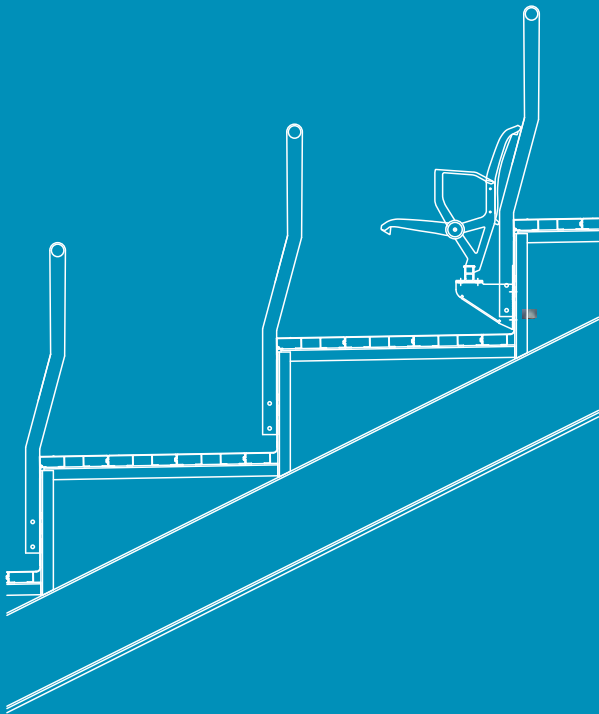
Today's sports arenas include multiple participant viewing and seating areas. Means of Egress, Crowd Control and Separation are all factors which designers must consider when maintaining safe and enjoyable environments. Careful attention must be given to local and national codes to ensure full compliance.

## The Solution

- Offering custom Aluminum railings with stainless steel cable, mesh or picket infills offer sustainable solutions while also enhancing the aesthetics of the arena.

# STANDING ROOM RAILING

# SEPARATION RAILING





TUTTLE, operating since 1955, is the largest fabricator of non-ferrous welded and mechanical hand railings in the United States. We fabricate stainless steel, aluminum and glass railings on a national and international scale.

Offering three categories of railing:

**Elite Designer Series, Architectural Solutions** and **Industrial**, we are sure to have a system, custom or modular to meet your needs. Our custom ornamental and decorative railing systems are featured in some of the most iconic building throughout the country.

For more information on Tuttle and our products, please visit our website. You can also find product information and specifications on **MasterSpec**.



Office:  
120 Shadowlawn Drive  
Fishers, Indiana 46038

502.634.3626  
800.328.4496  
317.845.1328 F

[tuttlerailing.com](http://tuttlerailing.com)